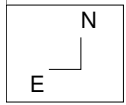


Leo

Cnc

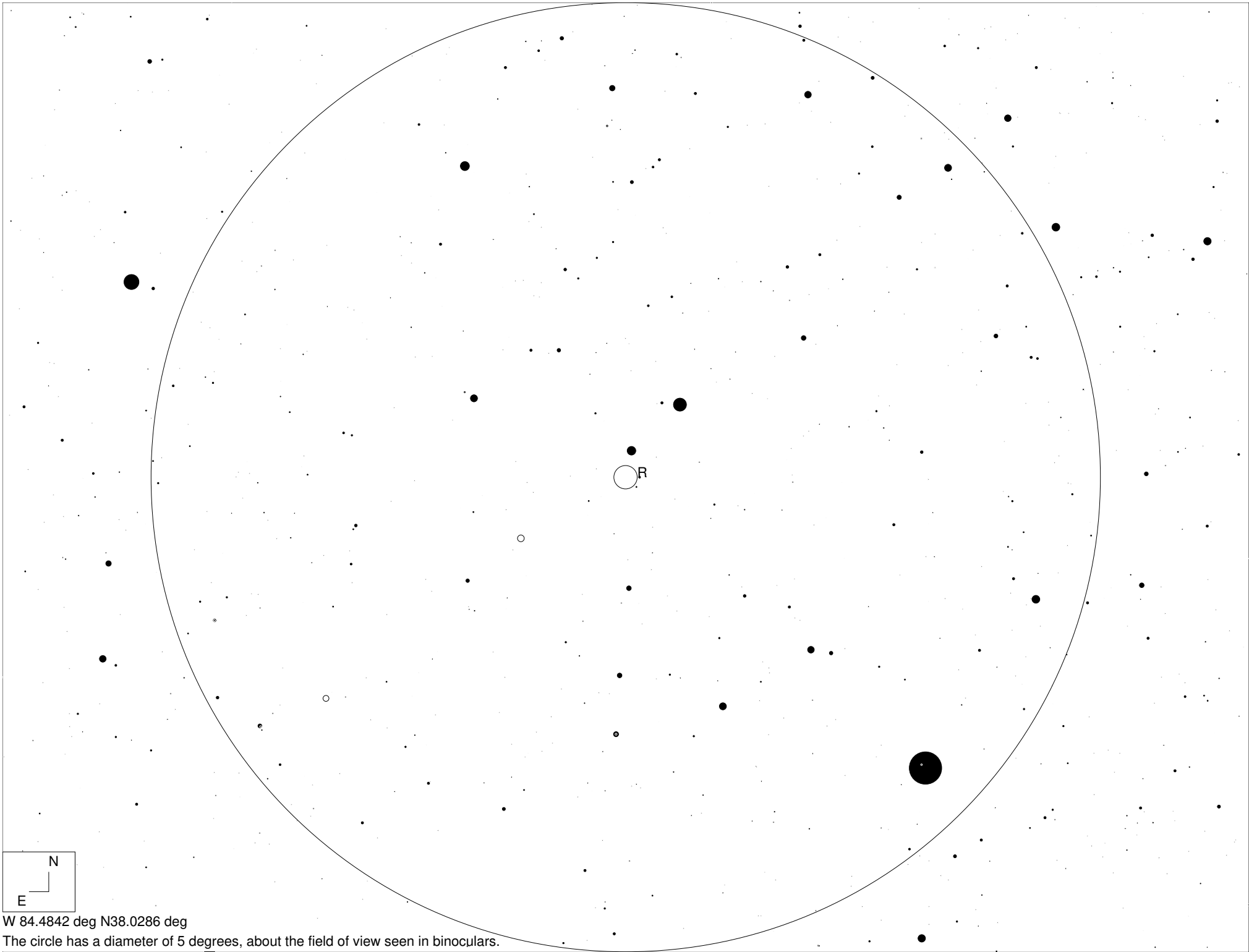
M44

M67



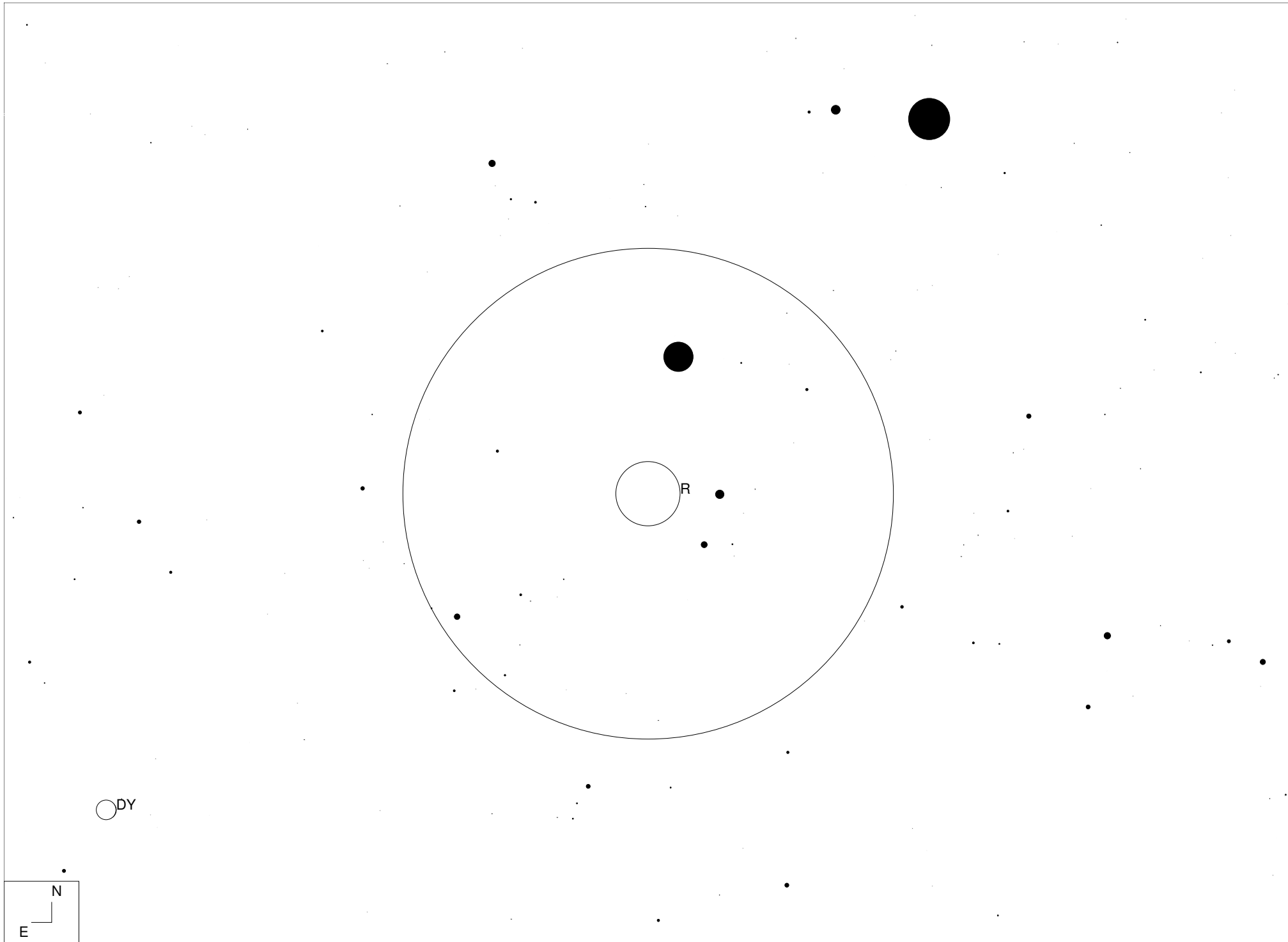
The circle has a diameter of 5 degrees, about the field of view in binoculars.

15 Apr 2017 22:00:00 EDT



W 84.4842 deg N38.0286 deg

The circle has a diameter of 5 degrees, about the field of view seen in binoculars.



W 84.4842 deg N38.0286 deg

The large circle has a diameter of 1/2 degree, about the apparent diameter the Moon. The small circle represents the approximate brightness of R Leonis at maximum.